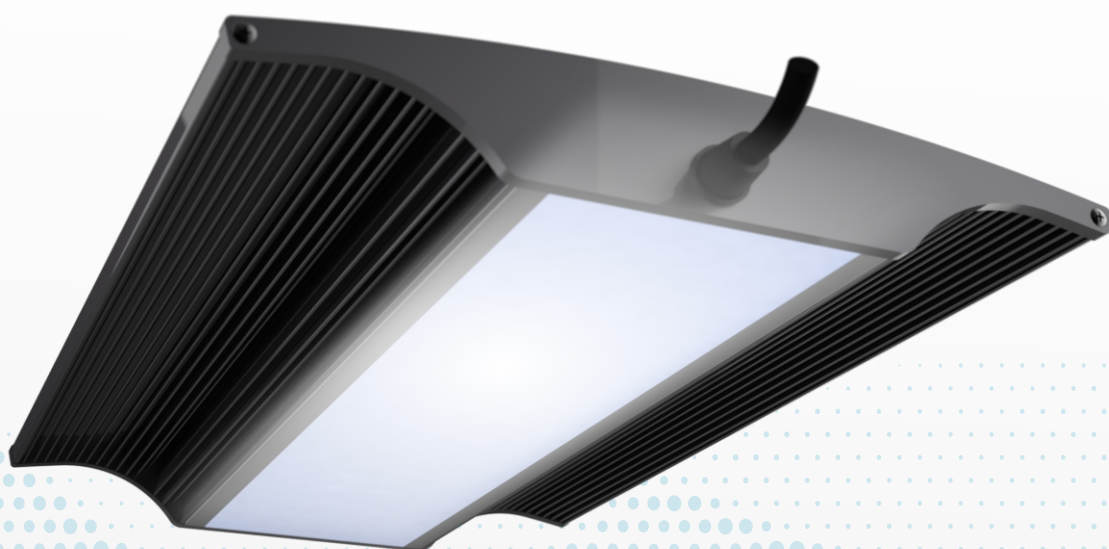


VERVVE_{G3}



Giesemann Aquaristic GmbH
Bürdestr. 14 · D-41334 Nettetal
Tel. +49 - 2157 / 81 29 90
Fax +49 - 2157 / 81 29 99
www.giesemann.de
info@giesemann.de

SCOPE OF DELIVERY & SAFETY INSTRUCTIONS

Honoured customer, thank you very much for your confidence in Giesemann quality products. Our experiences in the area of the Aquatics as well as modern illumination technology guarantees the quality standard of our products. Please read this manual in its entirety in order to guarantee optimal function and operational reliability of your product over many years. Failure to observe the following points may prove dangerous or can violate existing guidelines.



All Giesemann fixtures are equipped with the CE sign. You find this sign on the type sign in the fixture or on any external power supply box.

After unpacking, please check to ensure the condition of your lamp and that all components are present. Damage must be reported immediately to your specialist supplier in order to make a valid claim. The lamps may be installed only by authorized specialist staff. These lamps may not be operated if any damage is visible, if false function appears, after submersion into water, or any other deficiency that may effect safe operation.



The lamps never may be operated without the corresponding protection glasses; broken splashshields are to be replaced immediately in order to guarantee sufficient water protection.

The described fixture is designed exclusively for the illumination and addition of illumination of indoor aquariums only. The illumination is to be installed securely with a minimum distance of 25 cm (10") to the water surface above the aquarium and should never be operated under water. They should never be placed unsecured on the aquarium edge or have ventilation inhibited by way of surrounding equipment, panel work or covers. The fixtures and the electrical components should be protected unconditionally against direct water ingression.

Use the fixture with extreme caution if children or other people are present who do not understand the dangers of close proximity. Packaging materials may not be used for playing and should be disposed of securely: DANGER: risk of asphyxiation.

Never look directly into the light source. Bright light can lead to eye injuries!

Maintenance work on the light unit should only be carried out after removing applicable covers and ensuring the light is disconnected from the power supply at the wall. For safety reasons it is recommended that any work carried out in the aquarium, should only take place when the illumination is removed from the aquarium.



Do not attempt to open any LED light module, or power supply, as this will cause damage to the inner seal and will void the warranty.



The housing and protective glasses may become very hot during use: Avoid touching them!! When cleaning, it is particularly important to ensure that no moisture gets into the air vents inside or on top of the lights. Never cover the ventilation grilles with any item, and make sure that there can be sufficient heat exchange. DO NOT look directly at LEDs regardless of intensity!!

Improper use will invalidate any warranty claim. The transport and storage of the product must only be done using the original packaging.

The fixture is made of aluminium which is protected from seawater corrosion by a high quality powder coating. To keep the body clean and the light areas clear, clean regularly with a slightly damp cloth. Please note that salt deposits always should be removed immediately, otherwise even quality surfaces may become damaged over time. Failure to maintain effectively may lead to the loss of warranty.



Disposal: Once this appliance has expired, make the retired lights unusable by removing the plug from the socket and cut the cable. Dispose of the lamp in accordance with applicable environmental regulations in your country. Electrical waste may not be disposed of with household waste. Contact us for advice on recycling with your local authorities or dealer.



WARNING: Before using your fixture over an aquarium that may already contain sensitive fish/plants/corals or other animals that have become accustomed to an alternate light source. Please remember that your LED light is capable of delivering very high levels of light intensity within the frequency ranges that are of greatest importance to the animals. It is often impossible to judge spectral intensity by visual reference alone when comparing different lighting methods, so it is advised that a setting of no more than 50% intensity be used on any channel for the first few weeks, or until you have had time to see how the animals are adapting to the chosen spectrum and intensities that you have set. Additionally lighting durations may be reduced temporarily to reduce the chances of stress or shock.

SCOPE OF DELIVERY & SAFETY INSTRUCTIONS

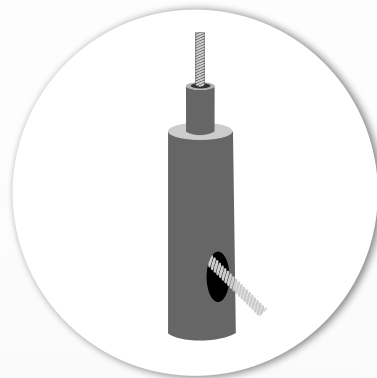
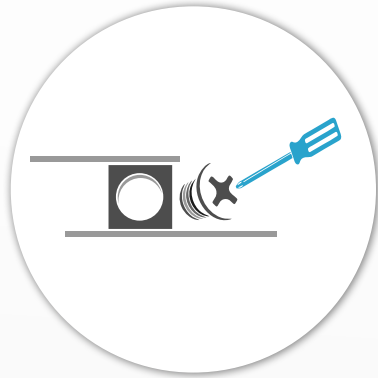


1 Installation

To assemble your VERVVE there are different mounting options (not included) which are available from your Giesemann dealer.

Installation of the VERVVE by wire suspension kit:

Attach the two wires on the top of your fixture by screwing the screws into the nuts on the top rail. Check the tightness of the cable holder. Install the ceiling mounting with suitable screws and wall plugs, making sure that the brickwork/ceiling on site can offer sufficient support. If necessary, special fastening systems, such as Hollow wall anchors, screws, etc may be necessary. If uncertain, please consult with a specialist company. Now run the steel cord through the bore of screw. Screw into the ceiling mount. Insert the loose end of the steel cable into the top opening of the cable holder hole and push through until the end exits through the side hole. Since your light is equipped with continuously variable height adjustment, it can be raised or lowered easily by applying pressure to the nozzle of the spring lock mechanism. For safety reasons, always support the lamp when it is being adjusted. When the light unit is gently lowered again with the nozzle released the cable will automatically lock in place. Always aim to set your light unit level with the aquarium.



Installation of the VERVVE with aquarium mounting arm*:

Install the mounting plate on top of your VERVVE by using the nuts in the top rail of your fixture. Fix the mounting plate on the mounting arm.

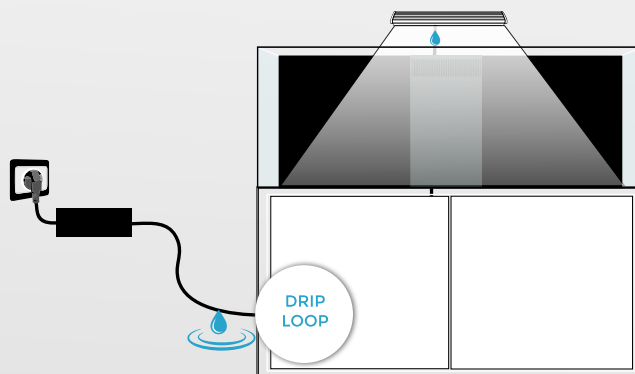
Install the mounting arm on the glass of your aquarium. Tighten the retaining screws to secure the mount to the aquarium.

2 PSU (power supply unit)



Each VERVVE is equipped with one power supply (PSU) with electronic controls that deliver a constant output. The input voltage is either 95- 130 Volt or 220-245 Volt 50/60 Hz. Use only the original power adaptor.

Follow the specific instructions of the PSU – printed on these devices. Do not use the PSU in humid areas and in location without proper ventilation. Maximum ambient temperature is 30°C / 85°F. First, connect the power supply to the socket of the fixtures cord. Between the fixture and the power adapter ensure there is a drip loop formed so that dripping water can not get into the power adapter or the electrical outlet.



2. The Power Supply



The use of alternate types may result in irreparable damage to the light unit and will invalidate the warranty.

Plug the power cord in after plugging in the external power supply into the wall outlet. The DC connection between the power supply and the lamp should not be modified in anyway.

Attempts to modify this connection with controllers or similar intervention will lead to immediate loss of warranty.

The power supply unit (PSU) can be mounted to your tank base or to a wall using the mounting holes. Mount your PSU where it won't get wet. Do not install it in any area with high humidity, low air circulation or next to your aquarium or sump.



Close supervision is necessary when an appliance is used by or near children. Keep out of reach of young children



Always unplug fixture and PSU from outlet when not in use, before putting on or taking off parts and before cleaning.

Never yank cord to pull plug from outlet. Grasp the plug and pull to disconnect.

Do not use appliance for other than intended use. The use of attachments not recommended or sold by the manufacturer may cause an unsafe condition.

Do not install or store the appliance where it will be exposed to weather or to temperatures below freezing or above 85°F.

Make sure appliance is securely installed before operating it. Read and observe all the important notices on the appliance.

If an extension cord is necessary, a cord with a proper rating should be used. A cord rated for less amperes or watts than the appliance rating may overheat. Care should be taken to arrange the cord so that it will not be tripped over or pulled.

Do not operate the fixture and the PSU in an enclosure that does not allow for proper air circulation.

Do not attempt to dismantle or modify fixture or PSU, as this may result in injury and will void the warranty.

The VERVvE and the PSU are NOT WATERPROOF; water can permanently damage it. This damage IS NOT covered under warranty. Protect these components from splashes, drips or other contact with water.

DO NOT immerse in water. If the appliance falls into the water, DON'T reach for it! First unplug it and then retrieve it. If electrical components of the appliance get wet, unplug the appliance immediately (non-immersible equipment only).

Carefully examine the appliance after installation. It should not be plugged in if there is water on parts not intended to be wet.

This product carries an ingress protection rating of IPX0 and must not be immersed in water.



Danger: To avoid possible electrical shock, special care should be taken since water is employed in the use of aquarium equipment.

DO NOT attempt repairs yourself; return the appliance to the manufacturer for service or discard.

Do not operate any appliance if it has a damaged cord or plug, if it is malfunctioning or if it is dropped or damaged in any manner. The power cord of this appliance cannot be replaced: If the cord is damaged, the appliance should be discarded. Never cut the cord. Damage from dropping your fixture or PSU IS NOT covered under warranty.



3 Temperature management

The VERVvE G3 fixtures are equipped with a large heat sink surface, a powerful fan and a smart temperaturemanagement system. Dependent upon the internally measured temperature on each LED board and in the fixture itself, the fan is engaged automatically and will vary speed accordingly.

In the event of overheating, inbuilt protection will automatically dim down the unit and switch off the LED cluster. The fan will continue to run until the correct temperature has been attained at which point, the fixture will automatically re-engage. Repeated overheating may damage the electronics and should be notified to your specialist dealer immediately.



4 Turning On

After supplying power, the VERVvE will start automatically. After a short system check, the luminaire is ready for use.

Download our lynk app from the Apple AppStore or the Google Play Store and follow the instructions. We have provided instructions for using the app on our website



We have taken great care with the luminaire, the software and the associated descriptions. Despite the greatest care and all kinds of technical technical assistance Our products are made by people.

Therefore, errors cannot be excluded. We welcome constructive criticism and suggestions. For help with questions of understanding or technical problems can be found in the support area at:

www.giesemann.de/FAQ.

NOTE:

FOR THE ONE (1) YEAR WARRANTY TO BECOME EFFECTIVE, THE PRODUCT TO WHICH THIS LIMITED WARRANTY RELATES MUST BE REGISTERED WITHIN THIRTY (30) DAYS OF PURCHASE. INSTRUCTIONS FOR REGISTRATION ARE INCLUDED BELOW.

Manufacturer / Declaration of Conformity

It is hereby confirmed that the VERVVE G3 LED module complies with all the following design and construction, as well as the version placed on the market by us, complies with all the provisions and basic safety requirements of the:

- Low Voltage Directive 2006/95/EC
- Waste Electrical Equipment Directive (WEEE) 2002/96/EC
- EMC Directive 2004/108/EC
- Product Safety Directive 2001/95/EC
- ERP Directive 2009/125/EC

and the applicable standards:

- DIN EN 60598-1 (Luminaires - general requirements and tests)
- DIN EN 60598-2-11 (Special requirements for aquarium luminaires)
- DIN EN 62471 (Photobiological safety of LEDs).



In the event of changes to the luminaires not agreed with GIESEMANN Lichttechnik GmbH, this declaration shall lose its validity.

CE Declaration of Conformity

The company

Giesemann Lichttechnik & Aquaristik GmbH
Bürdestraße 14 – 41334 Nettetal – Germany
declare under our sole responsibility that the products:

AURORA V8

to which this declaration relates are in conformity with the technical requirements of the following European Community directives & standards or other normative documents

- 98/37/EC / - EEC 89/336 - EEC 73/23 AND RELATED AMENDMENTS AND ADDITIONS (B.T.)

The following technical standards and specifications have been observed:

Safety: EN 60335-1 / EN 60335-2- 55 AND RELATED AMENDMENTS / EN 292-1-2 / CEI 61-50

EMC directive: EN 50081-1 / EN 50081-2 and the following amendments / EN 5008

16.05.2021, Nettetal - Germany